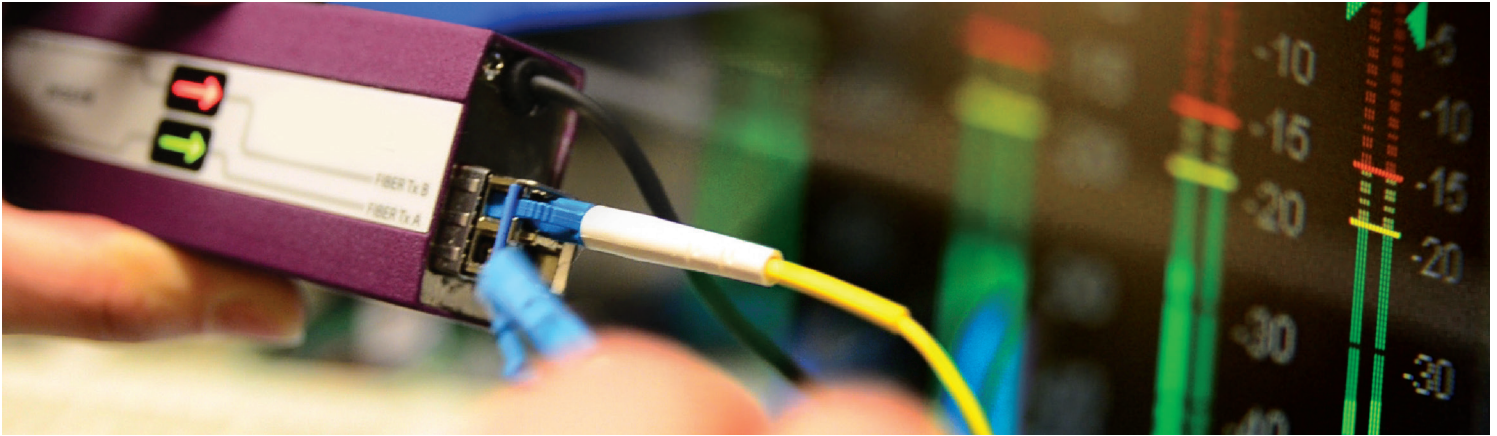


Little-Red

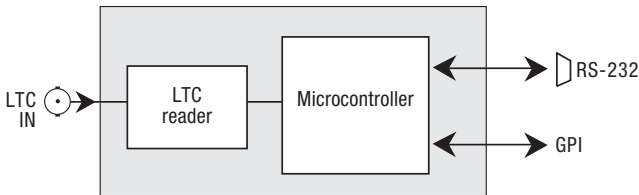
Linear Timecode to RS-232



Cost-efficient performance and versatility.

Self-powered from the RS-232 port, the Little-Red micro-sized reader from Grass Valley, a Belden Brand, is the ideal LTC input to a PC, Mac or SGI.

Four opto-isolated GPI outputs which trigger at user selectable times enable the reader to control multievent sequences. These GPIs may also be directly activated via the serial port. Two GPI inputs may be assigned as triggers for operations such as a time capture.



Little-Red Functional Block Diagram

KEY FEATURES

- Balanced or unbalanced LTC input
- Self-powered from RS-232 port
- 2 GPI trigger inputs
- 4 opto-isolated GPI control outputs
- Timecode presence detection
- Timecode coincidence detection
- Computer configurable
- Simple ASCII control protocol
- Time address ascendancy detection

SPECIFICATIONS

Input signal: Linear timecode (LTC)

Level: 100 mVp-p to 10 Vp-p

Status led: Bi-colored LED for power and LTC presence

CONNECTORS

LTC: BNC (floating outer shell)

RS-232: DE-9S (PC compatible)

GPI I/O: 10 pin header (1 m mating cable supplied)

Power: From RS-232 port RTS and DTR

Dimensions: 90 mm x 33 mm x 16 mm (3.5 in. x 1.3 in. x 0.6 in.)

ORDERING

LRED

LTC reader to RS-232

GVB-1-0266B-EN-DS